

Department of Entomology
123 West Waters Hall
K-State Research and Extension
Manhattan, Kansas 66506
785-532-5891
<http://www.entomology.ksu.edu/extension>

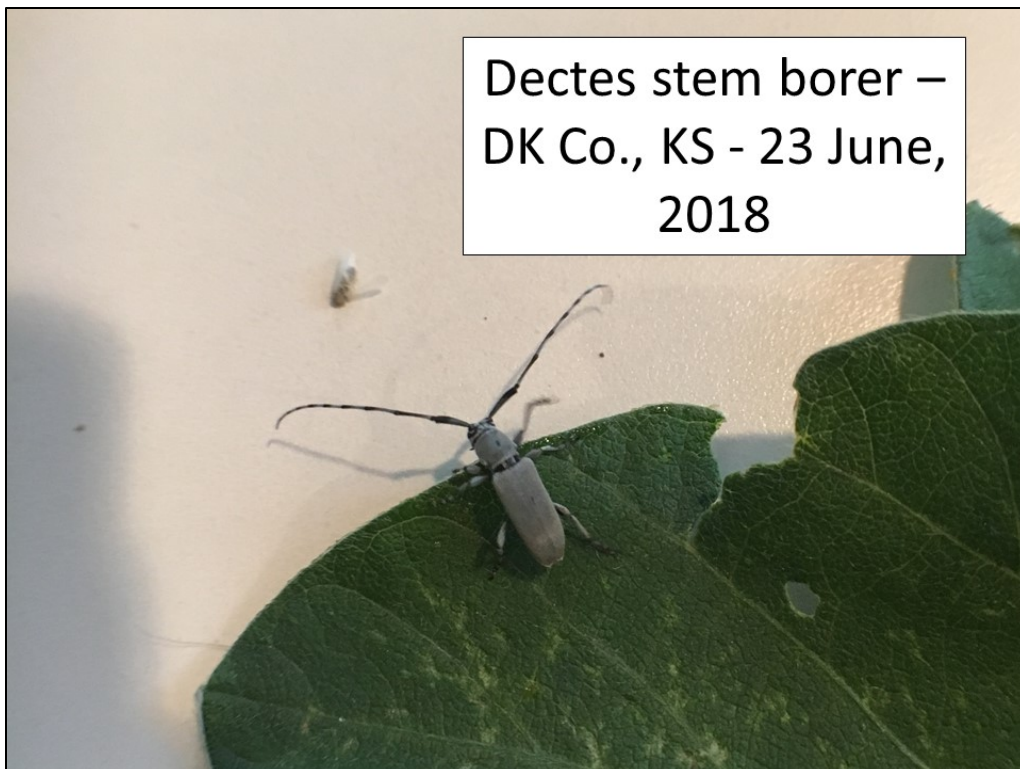


June 28, 2018 No 11

Soybean Update
Corn and Sorghum Update
Alfalfa Update

Soybean Update

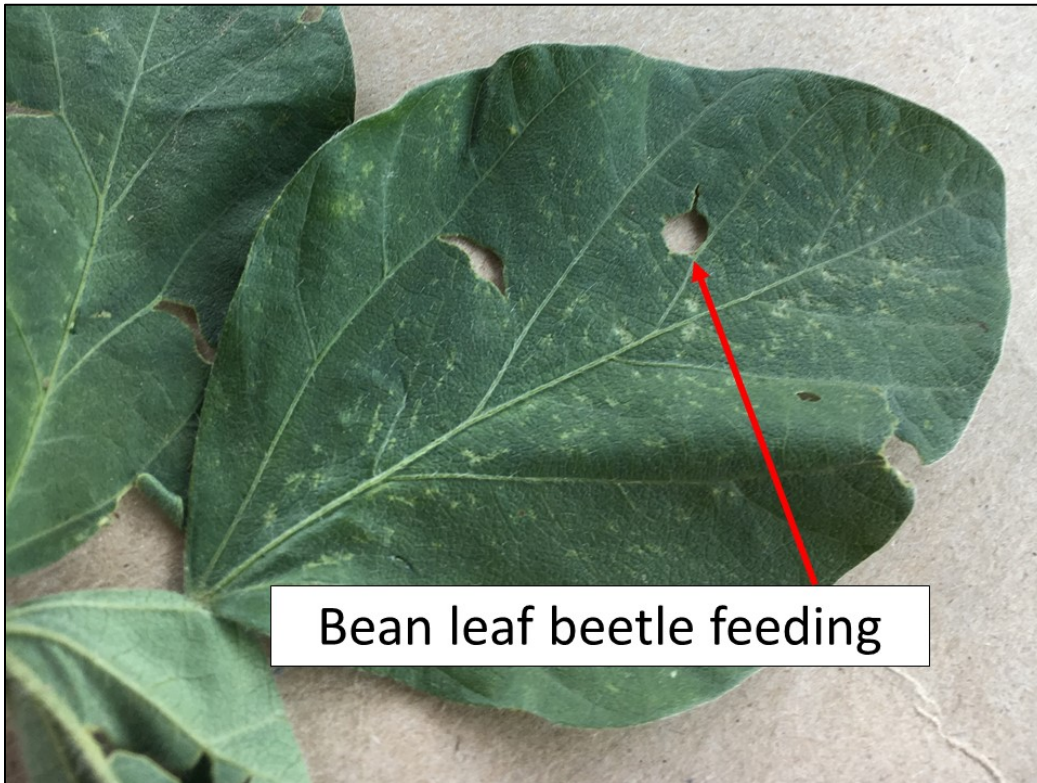
The first adult *Dectes* stem borer was detected on 23 June, from north central Kansas (specifically, DK Co.). These beetles traditionally spend approximately 7-14 days congregating or aggregating around the borders of stubble fields near where they overwintered. Then, they disperse throughout soybean and sunflower fields and begin depositing eggs in plants of either crop. Several more have been collected since the 23rd.



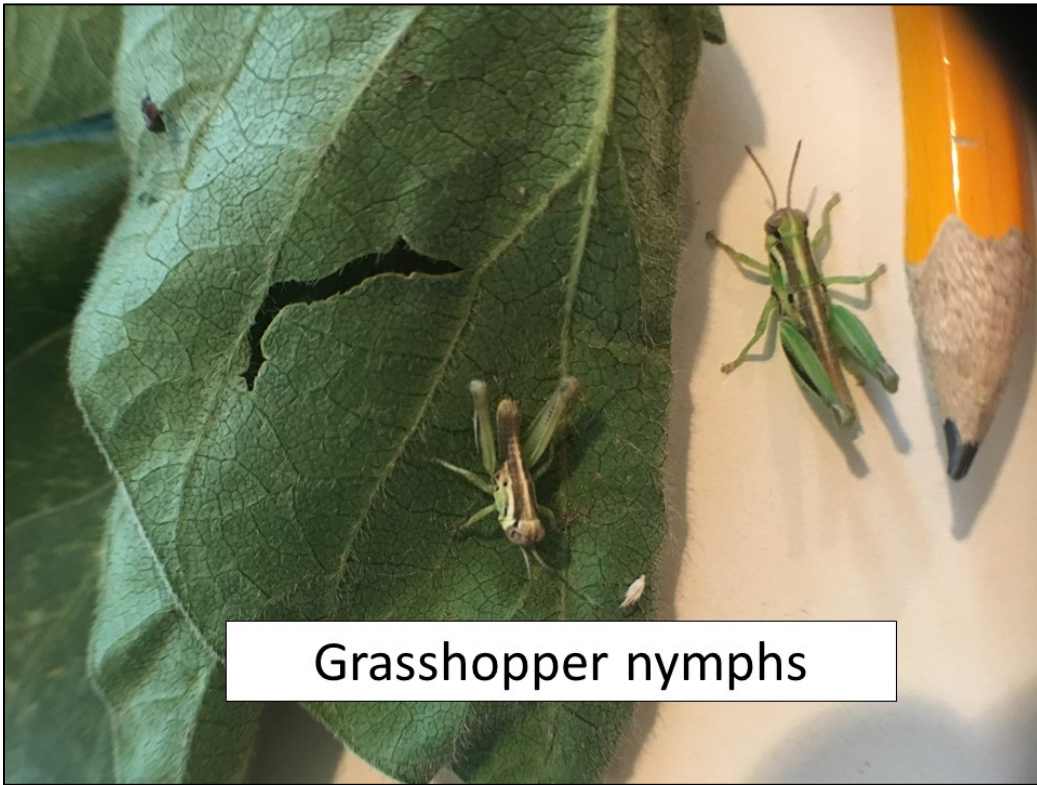
Kansas Insect Newsletter

June 28, 2018 No 11

Bean leaf beetle adults have been and will continue chewing characteristic round or oblong holes in soybean leaves. However, at least around north central Kansas, populations seem reduced from recent years.



So far, other than a few small grasshopper nymphs, there seem to be less defoliators than usual in either alfalfa or soybeans. However, there is still time left for significant populations to develop. A few garden webworms and yellowstriped armyworms were collected from a couple of fields and many of the soybeans are still very small, in the 3-5 trifoliate stage.



Grasshopper nymphs



Garden webworm –
alfalfa or soybean



Jeff Whitworth

Holly Davis

HOME

Corn and Sorghum Update

Chinch bug populations continue to increase at a very disconcerting rate. Most corn throughout north central Kansas is far enough along in its development to tolerate large numbers of chinch bugs. Smaller sorghum can still be seriously stressed by growing populations of chinch bugs, especially as the hot and dry conditions return. For more information of chinch bug management in sorghum, please see the KSU 2018 Sorghum Insect Management Guide: <https://www.bookstore.ksre.ksu.edu/pubs/mf742.pdf>



One relatively mature fall armyworm larva was also detected. Thus, in approximately 2-3 weeks there will be a new generation of fall armyworm larva ready to start feeding, most likely, on sorghum.



Jeff Whitworth

Holly Davis

[HOME](#)

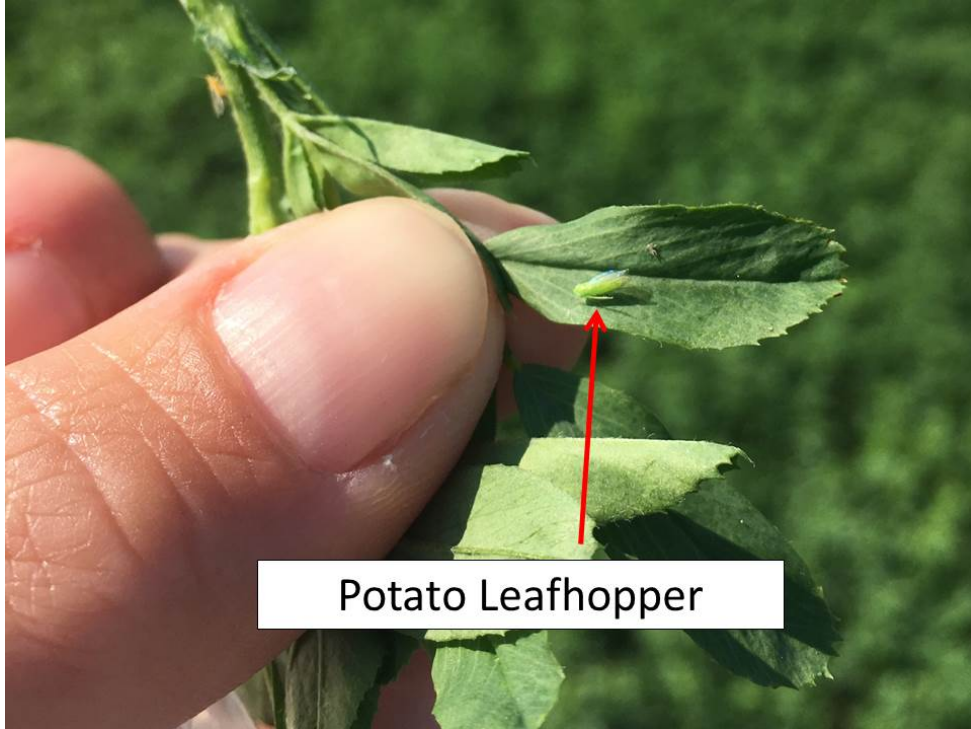
Alfalfa Update

Several alfalfa fields were sampled in north central Kansas this past week. The alfalfa canopy remains an excellent habitat for many insects, especially those fields not treated for alfalfa weevils this year. Many of these insects are beneficial.



Robber fly – predatory on a wide range of insects

Very few pests, or potential pests, were detected although there were a few potato leafhoppers present. These small, lime green, herky-jerky, moving pests are apparently just beginning to migrate into KS, as we didn't find any earlier in the week, and now are only finding a couple of adults. For more information relative to potato leafhopper management, please refer to the KSU 2018 Alfalfa Insect Management Guide: <https://www.bookstore.ksre.ksu.edu/pubs/mf809.pdf>



Jeff Whitworth

Holly Davis

[HOME](#)

Kansas Insect Newsletter

June 28, 2018 No 11

Sincerely,

Jeff Whitworth
Extension Specialist
Field Crops
phone: 785/532-5656
e-mail: jwhitwor@ksu.edu

Holly Davis
Research Associate
Phone: (785) 532-4730
e-mail: holly3@ksu.edu



Kansas State University is committed to making its services, activities and programs accessible to all participants. If you have special requirements due to a physical, vision, or hearing disability, contact *LOCAL NAME, PHONE NUMBER*. (For TDD, contact Michelle White-Godinet, Assistant Director of Affirmative Action, Kansas State University, 785-532-4807.)

Kansas State University Agricultural Experiment Station and Cooperative Extension Service

K-State Research and Extension is an equal opportunity provider and employer. Issued in furtherance of Cooperative Extension Work, Acts of May 8 and June 30, 1914, as amended. Kansas State University, County Extension Councils, Extension Districts, and United States Department of Agriculture Cooperating, John D. Floros, Director.