

Department of Entomology  
123 West Waters Hall  
K-State Research and Extension  
Manhattan, Kansas 66506  
785-532-5891  
<http://www.entomology.ksu.edu/extension>



## September 13, 2018 No 21

*Scolia dubia*: Parasitoid of Green June Beetle Larvae  
Goldenrod Soldier Beetles  
Household Pests of Kansas is now available!

### ***Scolia dubia*: Parasitoid of Green June Beetle Larvae**

Have you seen large wasp-like looking insects feeding on flowering plants such as wild onion, *Allium* spp and goldenrod, *Solidago* spp.? Well, this is *Scolia dubia*, which is a parasitoid of green June beetle, *Cotinus nitida*, larvae (grubs) located in the soil. Parasitoids are approximately 3/4-inches long with purple to black wings. The abdomen has red-brown markings and two very conspicuous yellow spots on both sides of the third abdominal segment (Figure 1). The parasitoids may be seen flying in a figure-eight pattern several inches above turfgrass infested with green June beetle larvae. The parasitoid can be seen feeding on goldenrod flowers along with goldenrod soldier beetle, *Chauliognathus pennsylvanicus*, adults (Figure 2) (see next article).

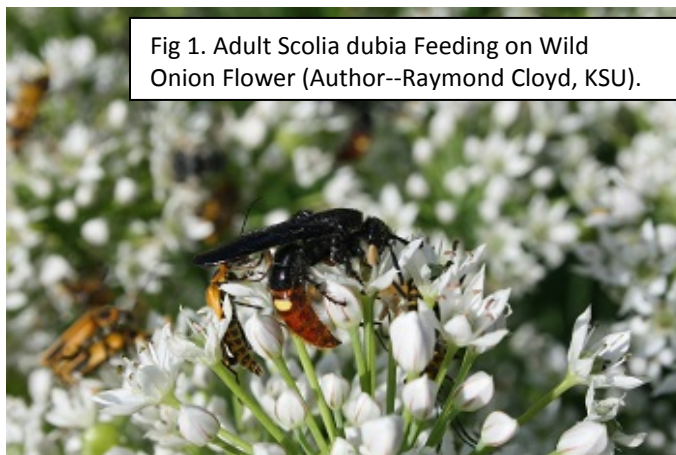


Fig 1. Adult *Scolia dubia* Feeding on Wild Onion Flower (Author--Raymond Cloyd, KSU).



Fig 2. *Scolia dubia* Adult Feeding on Goldenrod Flowers Along with Goldenrod Soldier Beetle Adults (A.--Raymond Cloyd, KSU)

Female parasitoids enter the burrow of a green June beetle larva, paralyze the larva by stinging it, and then attach an egg to the underside of the larva. After hatching, the parasitoid larva consumes the dead green June beetle larva. *Scolia dubia* overwinter as a pupa in a cocoon located at the bottom of the burrow and then emerge (eclose) later as an adult. Adult parasitoids typically emerge (eclose) in middle to late August and feed on flower pollen and nectar. These parasitoids, unlike cicada killer wasps, are not very aggressive and will only sting (at least the females) when handled or stepped on with bare feet.

Raymond Cloyd

---

[HOME](#)

## Goldenrod Soldier Beetles

Hordes of goldenrod soldier beetle, *Chauliognathus pennsylvanicus*, adults are now feeding on goldenrod (*Solidago* spp.) (Figure 1) and other flowering plants. Adults are extremely abundant feeding on the flowers of wild onion (*Allium* spp.) (Figure 2), and can also be seen feeding on linden trees (*Tilia* spp.) in bloom. Adults, in fact, can be seen feeding and mating simultaneously. The goldenrod soldier beetle is common to the western and eastern portions of Kansas.



Fig 1. Goldenrod Soldier Beetle Adults Feeding On Goldenrod Flowers (A.--Raymond Cloyd, KSU)



Fig 2. Goldenrod Soldier Beetle Adults Feeding on Wild Onion Flowers (A.--Raymond Cloyd, KSU)

Adults are about 1/2 inch (12 mm) long, elongated, and orange with two dark bands located on the base of the forewings (elytra) and thorax (middle section) (Figure 3). Adults are usually present from August through September. Adult soldier beetles feed on the pollen and nectar of flowers; however, they are also predators, and will consume small insects such as aphids and caterpillars. Flowers are a great place for the male and female soldier beetle adults to meet, get acquainted, and mate (there is no wasting time in the insect world 😊) (Figure 4). Soldier beetle adults do not cause plant damage. Sometimes adults will enter homes but they are rarely a concern. The best way to deal with adults in the home is to sweep, hand-pick, or vacuum.

Fig 3. Goldenrod Soldier Beetle Adult (Author-- Raymond Cloyd, KSU).



Fig 4. Goldenrod Soldier Beetle Adults Mating (A.-- Raymond Cloyd, KSU)



Adult females lay clusters of eggs in the soil. Each egg hatches into a larva that is dark-colored, slender, and covered with small dense hairs or bristles, which gives the larva a velvety appearance. The larva resides in soil feeding on grasshopper eggs. Occasionally, the larva will emerge from the soil to feed on soft-bodied insects and small caterpillars.

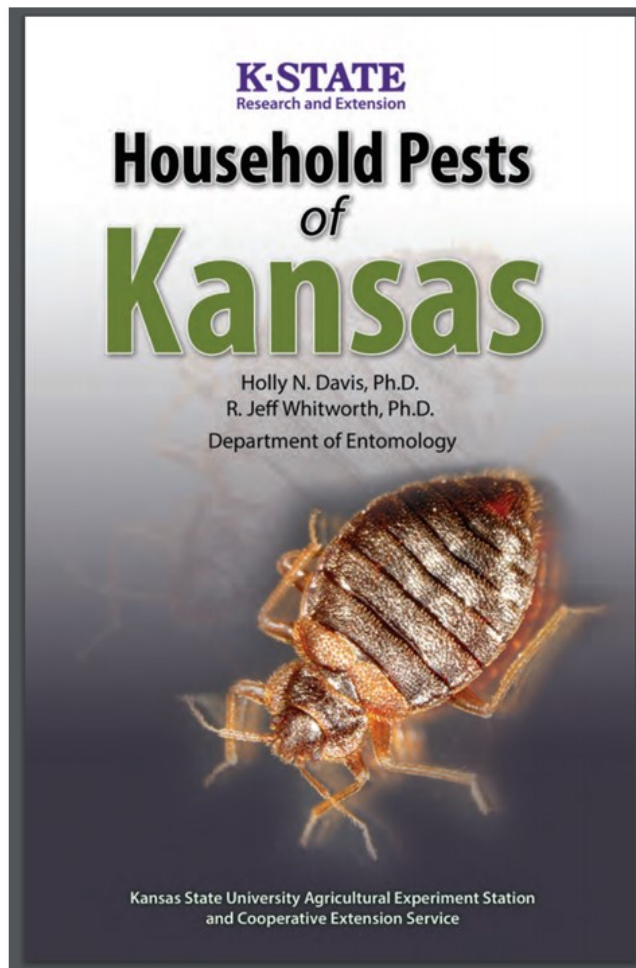
Raymond Cloyd

---

[HOME](#)

## Household Pests of Kansas is now available!

Household Pests of Kansas was written to help homeowners and pest managers identify and manage key arthropod pests found in and around Kansas homes including insects, spiders, ticks and more. This guide includes color photos, descriptions, basic biology, types of damage, and management options. It is a valuable reference for all Kansas residents. You can download your copy today, or order your print version from the KSRE bookstore here: <https://www.bookstore.ksre.ksu.edu/Item.aspx?catId=526&pubId=21199>





# Kansas Insect Newsletter

September 13, 2018 No 21

---

Sincerely,

Raymond A. Cloyd  
Professor and Extension Specialist  
Horticultural Entomology/Integrated Pest Management  
Phone: 785-532-4750  
Fax: 785-532-6232  
e-mail: [rcloyd@ksu.edu](mailto:rcloyd@ksu.edu)

Jeff Whitworth  
Extension Specialist  
Field Crops  
phone: 785/532-5656  
e-mail: [jwhitwor@ksu.edu](mailto:jwhitwor@ksu.edu)

Holly Davis  
Research Associate  
Phone: (785) 532-4730  
e-mail: [holly3@ksu.edu](mailto:holly3@ksu.edu)



Kansas State University is committed to making its services, activities and programs accessible to all participants. If you have special requirements due to a physical, vision, or hearing disability, contact *LOCAL NAME, PHONE NUMBER*. (For TDD, contact Michelle White-Godinet, Assistant Director of Affirmative Action, Kansas State University, 785-532-4807.)

## **Kansas State University Agricultural Experiment Station and Cooperative Extension Service**

K-State Research and Extension is an equal opportunity provider and employer. Issued in furtherance of Cooperative Extension Work, Acts of May 8 and June 30, 1914, as amended. Kansas State University, County Extension Councils, Extension Districts, and United States Department of Agriculture Cooperating, Ernie Minton, Director.