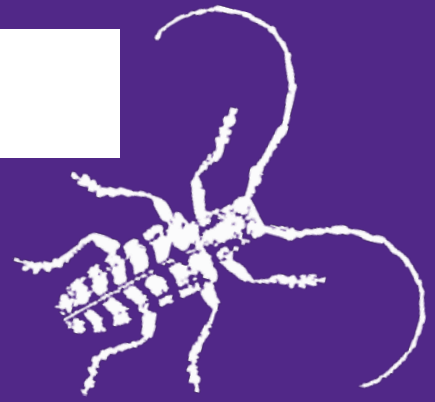


# Kansas State University Extension Entomology Newsletter

For Agribusinesses, Applicators, Consultants, Extension Personnel & Homeowners

Department of Entomology  
123 West Waters Hall  
K-State Research and Extension  
Manhattan, Kansas 66506  
785-532-5891  
<http://blogs.k-state.edu/kansasbugs/>  
<http://www.entomology.ksu.edu/extension>



**June 5, 2020 No 9**

---

ID to last week's bug

Identify This Insect

Corn—corn rootworm larva

Alfalfa—pea aphids, adult green lacewings, lady beetles, potato leaf hopper

Bug Joke of the Week

## **ID to last week's bug**

Lilacs – These are lilacs. Lilacs bloom on old wood, so I did not get to enjoy the blossoms this year. In this situation, our donkeys took a liking to them and decided to eat some of the bark, so they needed to be pruned to produce some new growth. Pruning is also an important practice if you have ash lilac borers.

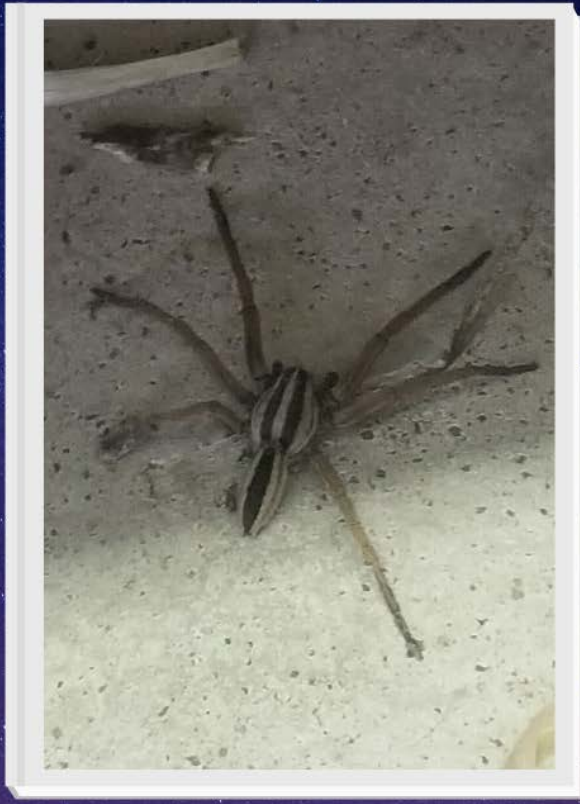
Frannie Miller

---

HOME

Identify This Insect

Can you identify this spider and tell  
and interesting fact about it?



## Corn—corn rootworm larva

Corn root sampling yielded the first western corn rootworm larva from north central Kansas on 3 June (fig 1). Many areas of continuous susceptible corn were sampled from fields that had significant corn rootworm adults in 2019. This was the only larva found but rootworm larvae will probably be hatching and start root feeding over the next 7-10 days.



Figure 1 Corn rootworm larva

---

Jeff Whitworth

[HOME](#)

## Alfalfa---pea aphids, adult green lacewings, lady beetles, potato leaf hopper

Many alfalfa fields were sampled throughout north central Kansas over the last few days. Very few pea aphids were detected (fig 2.) – but those that remain are providing nutrition for many beneficials in alfalfa fields i.e., adult green lacewings and lady beetles (many) and lady beetle larvae (fig 3.). No alfalfa weevils were observed.



Figure2 Pea aphids



Figure 3a Adult green lacewing



Figure 3b Adult ladybug



Figure 3c Lady beetle larva

## Kansas Insect Newsletter

June 5, 2020 No 9

---

However, potato leafhoppers, all adults, were collected in every field sampled (fig 4.). This indicates potato leafhoppers are immigrating into the state and will soon, if not already, be depositing eggs in stems, which soon hatch and thus increase populations. Potato leafhoppers remove plant juice and while so doing may inject a toxin into the plant. This feeding alone, may stress plants, especially in the often hot/dry conditions in July/August in Kansas. However, the introduction of a toxin may also negatively affect the plants. One characteristic symptom of potato leafhopper feeding starts out with yellowing from the tip of the leaves and travels through the leaf to the stem. This is often called “hopper burn” and can then negatively impact alfalfa production, both in quantity and quality by lowering the nutritional value.



Figure 4 Potato leafhopper

---

Jeff Whitworth

HOME

# Kansas Insect Newsletter

June 5, 2020 No 9

---

## Bug Joke of the Week

Q: What did one flea say to the other?

A: Should we hop or take the dog?

Q: What did one lightening bug say to the other?

A: "You Glow Girl"!

Jeff Whitworth

---

HOME

**Sincerely,**

Jeff Whitworth  
Extension Specialist  
Field Crops  
phone: 785/532-5656  
e-mail: [jwhitwor@ksu.edu](mailto:jwhitwor@ksu.edu)

# Kansas Insect Newsletter

June 5, 2020 No 9

---

Frannie Miller  
Pesticide Safety & IPM Coordinator  
Kansas State University  
600 W. Woodside  
McPherson, KS 67460  
Phone: (620) 241-1523  
Fax: (620) 241-3407  
<http://www.ksre.ksu.edu/pesticides-ipm>



Kansas State University is committed to making its services, activities and programs accessible to all participants. If you have special requirements due to a physical, vision, or hearing disability, contact *LOCAL NAME, PHONE NUMBER*. (For TDD, contact Michelle White-Godinet, Assistant Director of Affirmative Action, Kansas State University, 785-532-4807.)

## **Kansas State University Agricultural Experiment Station and Cooperative Extension Service**

K-State Research and Extension is an equal opportunity provider and employer. Issued in furtherance of Cooperative Extension Work, Acts of May 8 and June 30, 1914, as amended. Kansas State University, County Extension Councils, Extension Districts, and United States Department of Agriculture Cooperating, , Ernie Minton, Director.