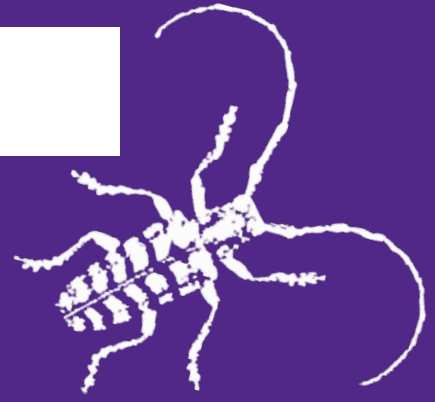


# Kansas State University Extension Entomology Newsletter

For Agribusinesses, Applicators, Consultants, Extension Personnel & Homeowners

Department of Entomology  
123 West Waters Hall  
K-State Research and Extension  
Manhattan, Kansas 66506  
785-532-5891  
<http://blogs.k-state.edu/kansasbugs/>  
<http://www.entomology.ksu.edu/extension>



**June 17, 2022, No 9**

---

Potato Leafhoppers  
Grasshoppers

## Potato Leafhoppers

The 1<sup>st</sup> potato leafhoppers were detected in northcentral Kansas on 10 June, but probably started immigrating in a few days prior to that. They will continue this immigration for about another month. As of 14 June, however, only adults were active (see fig 1) but they are depositing eggs which hatch into very tiny nymphs in approximately 4-7 days. Much alfalfa, however, has just been swathed, or soon will be, and this will help mitigate potato leafhopper damage by removing eggs/nymphs before they cause any damage (see fig 2-often called "hopper burn"). However, adults will continue to migrate into these fields- so monitoring should continue as the new growth emerges.



Figure 1. Adult potato leafhoppers

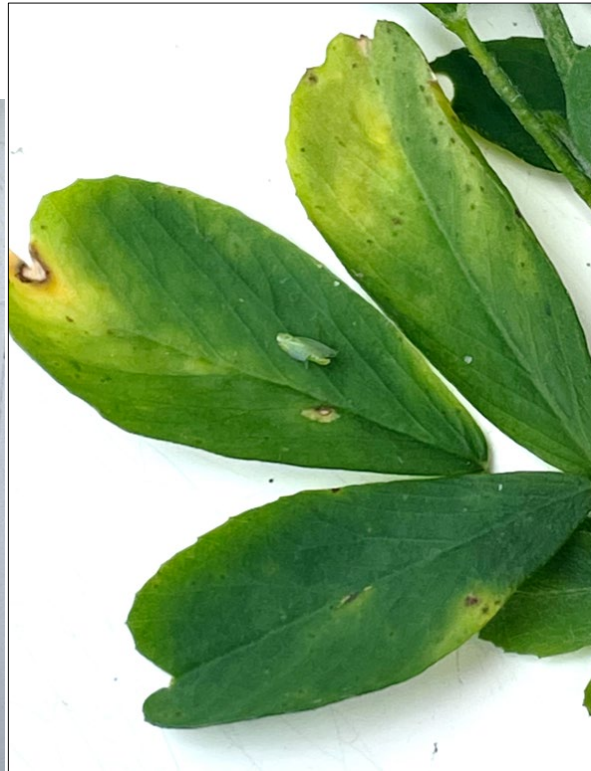


Figure 2. Hopper burn

---

Jeff Whitworth – Field Crops Entomologist

[HOME](#)

## Grasshoppers

Grasshopper eggs, deposited last fall, have been producing small nymphs for about the past 2 weeks. Thus, if field borders, weedy ditches, or any non-disturbed areas adjacent to crop fields are infested with these small nymphs- it is an ideal time to treat these areas to get good control (see fig 3).



Figure 3. Grasshopper nymphs

Jeff Whitworth – Field Crops Entomologist

---

HOME

**Sincerely,**

Jeff Whitworth  
Extension Specialist  
Field Crops  
phone: 785/532-5656  
e-mail: [jwhitwor@ksu.edu](mailto:jwhitwor@ksu.edu)

# Kansas Insect Newsletter

June 17, 2022 No 9

---

**KANSAS STATE**  
**UNIVERSITY**

Department of Entomology

Kansas State University is committed to making its services, activities and programs accessible to all participants. If you have special requirements due to a physical, vision, or hearing disability, contact *LOCAL NAME, PHONE NUMBER*. (For TDD, contact Michelle White-Godinet, Assistant Director of Affirmative Action, Kansas State University, 785-532-4807.)

## **Kansas State University Agricultural Experiment Station and Cooperative Extension Service**

K-State Research and Extension is an equal opportunity provider and employer. Issued in furtherance of Cooperative Extension Work, Acts of May 8 and June 30, 1914, as amended. Kansas State University, County Extension Councils, Extension Districts, and United States Department of Agriculture Cooperating, , Ernie Minton, Director.